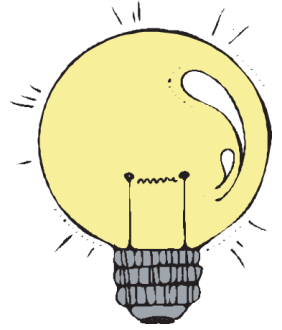


# Does light shine through?



1. Plastic

Yes

No

2. Foil

Yes

No

3. Net

Yes

No

4. Black paper

Yes

No

5. \$1.00

Yes

No

Which item had the brightest light shine through? Why?

---

---

---

---

---

---

---

---

---

---

Name \_\_\_\_\_

# Light Experiment

## Directions:

Give each student in the group one of these items:

- 1 flashlight
- A dollar bill
- 1 piece of black paper
- 1 piece of clear plastic wrap
- 1 piece of tin foil
- 1 net (I use a piece of a laundry bag from the Dollar Tree)

Tell each student that they have a specific job. If they are the flashlight holder, they turn it on and off. If they have the dollar, they hold the dollar up to the light, etc.

The students will decide if light can shine through each of the items and record on their sheet. I have my students shine the light against a wall to make sure.

\*I actually use this as an independent center!